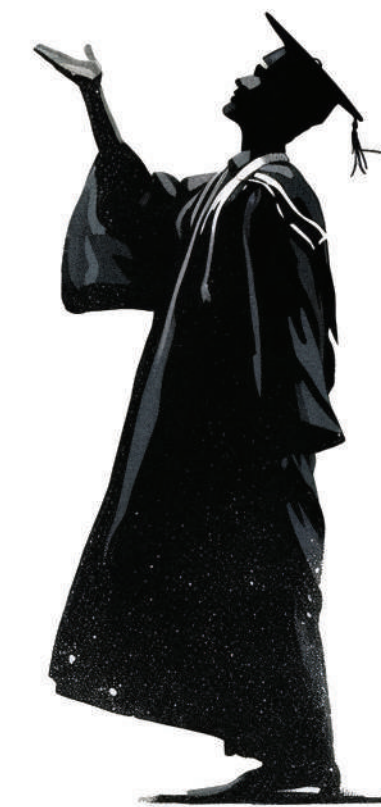




OUR KEY RECRUITERS

SHAPING MINDS THAT SHAPE THE FUTURE



1 Khan Road, Mankundu, Adjacent to Mankundu Railway Station, City-Chandannagar, Hooghly - 712139 West Bengal, India

📞 033 2683 1141
📞 +91 99030 72444
✉ info@skf.edu.in
🌐 skf.edu.in

APPROVALS & AFFILIATIONS



20 YEARS OF EXCELLENCE IN EDUCATION | 10,000+ ALUMNI
500+ CORPORATE ASSOCIATIONS | 900+ JOB OFFERS

ABOUT THE INSTITUTE

Supreme Knowledge Foundation (SKF), established in the erstwhile French Colony of Chandannagar, stands on a lush green campus spread across 15 acres of land in the district of Hooghly, West Bengal. From its inception, SKF has been at the forefront of imparting high-quality technical and professional education in the eastern part of India, offering formal degree programmes across diverse domains.



At SKF, education goes beyond classrooms. The institution is committed to developing professionals grounded in strong human values and a sense of world citizenship. With a focus on real-life industrial exposure, state-of-the-art infrastructure across disciplines, and the guidance of dedicated, qualified faculty, SKF creates a learning environment that is both rigorous and nurturing. The serene campus and professionally managed multidisciplinary ecosystem together form the hallmark of the institution.



Every programme at SKF is designed to support students on their journey toward graduation and long-term professional success. More than just a place of study, SKF strives to be a home away from home defined by its depth of character, long-standing traditions, diversity, commitment to academic excellence, and inspiring natural surroundings. It is an academic environment where learners are encouraged to grow, reflect, and prepare to create their tomorrow today.

OUR VISIONARY

Education is more than gathering information, it's transforming knowledge into meaningful action. At SKF, we believe true learning shapes opinions, broadens perspectives, and empowers individuals to make a difference.

Students are encouraged to think independently, solve problems, and engage deeply through academics, research, and real-world experiences. Interaction with diverse peers and faculty builds collaboration, confidence, and communication skills.

At SKF, education goes beyond degrees, it's about building perspective, strengthening capability, and preparing for life beyond campus.



Mr. Bijoy Guha Mallick
Chairman, Supreme Knowledge Foundation

Welcome to the beginning of your academic journey at SKF. We're delighted to have you take this important step with us.

Our programmes are designed to guide you through every stage of your education, helping you stay on track towards graduation and a successful professional future.

SKF's character is defined by academic excellence, diversity, and a vibrant learning environment that encourages exploration, growth, and self-discovery. Students are inspired to engage deeply, participate in campus activities, and make the most of every opportunity.



Dr. Souma Guha Mallick
Vice Chairman, Supreme Knowledge Foundation

We're delighted to have you join our vibrant academic community. At SKF, education goes beyond academics – we shape confident, responsible individuals ready to make a meaningful impact.

Our campus blends excellence, diversity, and warmth, creating a true home away from home. Every programme and initiative is designed to help you discover your strengths, expand your knowledge, and prepare for the future.

As you begin this journey, let your curiosity lead, participate fully, and take charge of your path to excellence.

Your safety and well-being remain our highest priority, with strict measures ensuring a secure and inclusive campus. At SKF, we are committed to nurturing your curiosity, confidence, and individuality, guiding you toward becoming the best version of yourself.



Debeshi Guha Mallick
Vice President, Supreme Knowledge Foundation

SUPREME ADVANTAGES



Ragging-free campus environment

Highly qualified, experienced, industry-linked, and dedicated faculty

Strong theoretical foundation for clear and robust fundamentals

Emphasis on project-based learning with real-life applications of technology

Exposure to emerging technologies through seminars and workshops

Field training focused on industry readiness

Separate in-campus hostel facilities for boys and girls

Simulation and CAD laboratories

Advanced computer laboratories

Photography and film-making lab

Design and animation lab

Food & Beverage, Production, Front Office, and Housekeeping labs

State-of-the-art infrastructure



ACADEMIC EXCELLENCE

Excellence in Placements & Industry Interface in Multidisciplinary Courses
Pioneers in Future-Ready Learning

Excellence in Quality Education & Industry Interface
Excellence in Multidisciplinary Education & Infrastructure

Our Excellence is recognised by

RANKING

- Ranked 2nd in West Bengal Top Engineering Colleges
- Ranked 2nd in West Bengal Top BBA Institutes
- Ranked 3rd in West Bengal Top B-school

Our Excellence is recognised by

SKF COLLABORATIONS



ACTIVE LOCAL CHAPTER OF NPTEL



INSTITUTE INNOVATION COUNCIL UNDER MHRD INNOVATION CELL



MEMBERSHIP OF NATIONAL DIGITAL LIBRARY



CSIR-CEERI PILANI



NODAL CENTRE OF MAKAUT, WEST BENGAL



CAPE PENINSULA UNIVERSITY OF TECHNOLOGY



TOPSTACK



MOU WITH INDIAN CYBER SECURITY SOLUTIONS

CAMPUS LIFE

SKF actively encourages the holistic development of its students. Through a variety of clubs and societies, learners are able to nurture interpersonal, creative, and leadership skills alongside academics. Annual sports meets, technical fests, and cultural events organised by students provide platforms to express talent, collaborate, and grow. Student clubs include the Music Club, Dance Club, Photography Club, Robotics Club, Literary Club, and IEEE Students' Branch – all contributing to a vibrant campus life that supports learning beyond the classroom.



SCHOOLS OF STUDIES

SKF comprises six schools of study offering more than 28 undergraduate and postgraduate programmes.

School of Engineering & Technology

- M.Tech in Computer Science Engineering
- B.Tech in Computer Science Engineering
- B.Tech in CSE (AI & ML) | B.Tech in Data Science
- B.Tech in Electrical Engineering | B.Tech in Mechanical Engineering
- B.Tech in Electronics & Communication Engineering
- B.Tech in Civil Engineering | Diploma in Civil Engineering
- Diploma in Mechanical Engineering | Diploma in Electrical Engineering



School of Information Technology

- Master of Computer Applications (MCA)
- Bachelor of Computer Applications (BCA)
- B.Sc in Cyber Security

School of Health Sciences

- Master of Optometry (M.Opto)
- Bachelor of Optometry (B.Opto)
- B.Sc in Medical Lab Technology (BMLT)
- B.Sc in Critical Care Technology (BCCT)



School of Animation & Multimedia

- M.Sc in Animation & Graphic Design
- B.Sc in Multimedia, Animation & Graphics

School of Hospitality

- B.Sc in Hospitality & Hotel Administration



School of Management

- Master of Business Administration (MBA)
- Bachelor of Business Administration (BBA)
- BBA in Hospital Management



SCHOLARSHIPS



SKF offers access to multiple government and institutional scholarship schemes to support deserving students:

Swami Vivekananda Merit-cum-Means Scholarship

Bigyani Kanya Medha Britti Scholarship

West Bengal Post Matric Scholarship (SC/ST/OBC)

OASIS Scholarship

Up to 100% Chairman's Merit Scholarship

Student Credit Card and Student Loan facilities

INTERNSHIP OPPORTUNITIES
